

PRODUCT BROCHURE

HALO™ 3 CO

TRACE LEVEL CARBON MONOXIDE ANALYZER



The HALO 3 CO ensures purity and process protection with:

- Parts per billion (ppb) carbon monoxide detection capability
- Wide measurement range, from 0 – 2500 ppm (in hydrogen)
- Freedom from calibration (absolute measurement technology)
- Low cost of ownership
- Compact design
- Simple software interface
- **NEW** optional Turbo Mode for lightning fast response of T90 < 10 seconds

Measure CO with Confidence

Whether for process control or quality control, gas suppliers need accurate, low-level contaminant monitoring to ensure gas quality with no impurities. For refineries and chemical plants it is especially critical to measure carbon monoxide in hydrogen since high levels can poison a customer's process and a supplier's reputation. CO is also a critical impurity in fuel-cell-grade hydrogen that can poison the fuel cell's catalyst.

Monitor purity with the HALO 3 CO analyzer, designed to provide unparalleled accuracy and reliability for your most critical carbon monoxide measurements. Compact and easy to use, this analyzer features proven Cavity Ring-Down Spectroscopy to detect carbon monoxide as low as 40 ppb in your gas.

Users enjoy freedom from periodic sensor maintenance, and with no calibration gases required, operating costs are nearly eliminated. With drift-free stability and rapid response time, the HALO 3 CO is ideal for the continuous, online gas monitoring that is critical to process control in gas and chemical industries or anywhere purity is a necessity.

Specifications

Performance

| | |
|---|--|
| Operating range: | See table below |
| Detection limit (LDL, 3σ/24h): | See table below |
| Precision (1σ, greater of): | $\pm 0.75\%$ or 1/3 of LDL |
| Accuracy (greater of): | $\pm 4\%$ or LDL |
| Speed of response: | < 1 minutes to 90% |
| Environmental conditions: | 10°C to 40°C, 30% to 80% RH (non-condensing) |
| Storage temperature: | -10°C to 50°C |

Gas Handling System and Conditions

| | |
|--------------------------|--|
| Wetted materials: | 316L stainless steel (corrosive gas version optional) 10 Ra surface finish |
| Gas connections: | 1/4" male VCR inlet and outlet |
| Leak tested to: | 1 x 10 ⁻⁹ mbar l / sec |
| Inlet pressure: | 10 – 125 psig (1.7 – 9.6 bara) |
| Flow rate: | Up to 1.8 slpm |
| Sample gases: | Most inert, toxic, passive and corrosive matrices |
| Gas temperature: | Up to 60°C |

Dimensions & Weight

| | |
|--|---|
| Standard sensor: | H × W × D: 8.73 x 8.57 x 23.6 in (222 x 218 x 599 mm) |
| Sensor rack (fits up to two sensors): | H × W × D: 8.73 x 19.0 x 23.6 in (222 x 483 x 599 mm) |
| Standard sensor weight: | 28 lbs (12.7 kg) |

Electrical and Interfaces

| | |
|----------------------------|---|
| Platform: | Max series analyzer |
| Alarm indicators: | 2 user programmable, 1 system fault, Form C relays |
| Power requirements: | 90 – 240 VAC, 50/60 Hz |
| Power consumption: | 40 Watts max. |
| Signal output: | Isolated 4–20 mA per sensor |
| User interfaces: | 5.7" LCD touchscreen, 10/100 Base-T Ethernet USB, RS-232, RS-485, Modbus TCP (optional) |
| Data storage: | Internal or external flash drive |
| Certification: | CE Mark |

Performance, CO

| | Range | LDL (3 σ) | Precision (1 σ) @ zero |
|----------------------------|--------------|-------------------|--------------------------------|
| CO in N ₂ : | 0 – 2000 ppm | 40 ppb | 15 ppb |
| CO in O ₂ : | 0 – 1800 ppm | 35 ppb | 12 ppb |
| CO in Clean Dry Air (CDA): | 0 – 2000 ppm | 40 ppb | 15 ppb |
| CO in Ar: | 0 – 1600 ppm | 30 ppb | 10 ppb |
| CO in He: | 0 – 1800 ppm | 35 ppb | 12 ppb |
| CO in H ₂ : | 0 – 2500 ppm | 50 ppb | 20 ppb |

Performance, CO with Turbo Mode (see page 4)

| | Range | LDL (3 σ) | Precision (1 σ) @ zero |
|----------------------------|--------------|-------------------|--------------------------------|
| CO in N ₂ : | 0 – 2000 ppm | 120 ppb | 40 ppb |
| CO in O ₂ : | 0 – 1800 ppm | 110 ppb | 35 ppb |
| CO in Clean Dry Air (CDA): | 0 – 2000 ppm | 120 ppb | 40 ppb |
| CO in Ar: | 0 – 1600 ppm | 90 ppb | 30 ppb |
| CO in He: | 0 – 1800 ppm | 110 ppb | 35 ppb |
| CO in H ₂ : | 0 – 2500 ppm | 150 ppb | 50 ppb |

Contact us for additional analytes and matrices.
U.S. Patent # 7,277,177

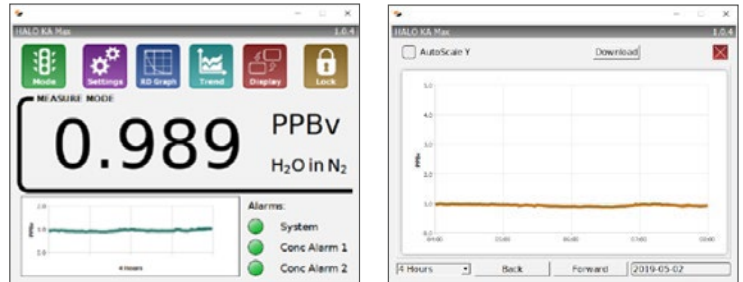


Analyzer Upgrades

Add more value your Spark analyzer with these powerful options:

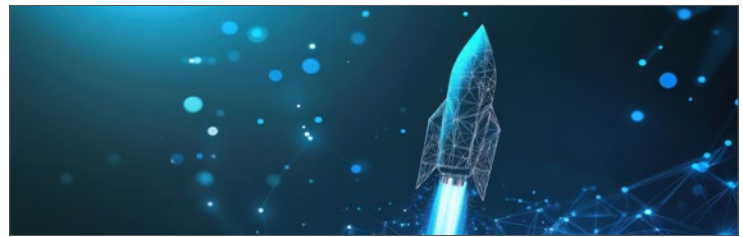
Serani™ Max Analyzer Interface Software

- Connect to your analyzer remotely from your computer via Ethernet (Windows XP or higher required)
- Data recording, plotting and analysis in real-time with the click of a button
- One-step data collection and other service function shortcuts



Turbo Mode

- Special software option to dramatically increase speed of response
- Fast process monitoring with $T_{90} < 10$ seconds
- This option makes the analyzer a drift-free, maintenance-free replacement for traditional NDIR systems



Annual Performance Verification

- Low-cost and easy remote verification process, with no need to return the analyzer to the factory
- Annual verification by Tiger Optics ensures that your analyzer continues to meet its original specifications
- Up-to-date Verification Certificate to comply with your QA/QC standards



Installation & Commissioning Package

- On-site analyzer installation and start-up by Tiger Optics trained personnel
- Ensuring correct installation helps prevent future issues with the analyzer or your sampling system
- Gain peace of mind and save money in the long run



GAIN REAL-TIME INSIGHT INTO YOUR PROCESS

Process Insights delivers premium analytical sensors, analyzers, instrumentation, software and solutions that are mission-critical to keep your operations, personnel, and the environment safe. Our commitment to customer satisfaction is evident through our diverse range of products, programs, and services, designed to accommodate various budgets and application needs.

CENTERS OF EXCELLENCE | PROVIDING PROVEN SOLUTIONS

Process Insights – The Americas

14400 Hollister Street, Suite 800B, Houston, TX 77066, USA +1 713 947 9591
info.americas@process-insights.com


Process Insights – EMEA

ATRICOM, Lyoner Strasse 15, 60528 Frankfurt, Germany +49 69 20436910
info.emeai@process-insights.com

Process Insights – APAC

Wujiang Economic and Technology, Development Zone, No. 258 Yi He Road, 215200 Suzhou, Jiangsu Province, China +86 400 086 0106
info.apac@process-insights.com
info.cn@process-insights.com

For a complete list of sales & manufacturing sites, please visit:
<https://www.process-insights.com/about-us/locations/>



REVOLUTIONIZING MEASUREMENT

EVERYWHERE™