

# LCD-82

Light Transmission  
Dust (Dry)

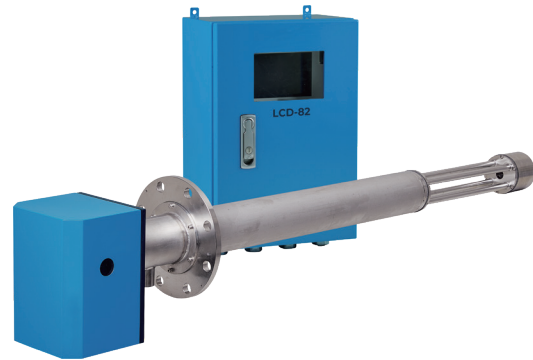


www.thomsongroup.com.au

In-situ

## Technical Specification

Measured Component	Dust, Opacity
Measurement Principle	Laser (Light Transmission Method)
Measuring Range	Dust : 0 ~ 20000 mg/m <sup>3</sup> Opacity : 0 ~ 100 %
Min. Measuring Unit	0.1 mg/m <sup>3</sup>
Zero Drift (168 hours)	< ±1 % FS
Span Drift (168 hours)	< ±2 % FS
Repeatability	< ±1 % FS
Linearity	< ±2 % FS
Response Time	< 5 seconds



System Component	Main Unit / Transceiver Probe Unit / Purge Motor Unit / Cables / Master Flange
Option	Calibration Jig / Main Unit Cabinet / IP66 or NEMA 4X

Feature	01 A model transformed from the LCD-80 cross-duct type to a probe type analyzer
	02 Suitable for ultra-high-concentration environments where light cannot pass through in cross-duct applications
	03 Ideal for sites with stack vibrations or distortion causing misalignment in cross-duct applications

## Other Specification

Measurement Condition	Operating Temp.	-20 ~ +55 °C
	Operating Pressure	3 bar (=300 kPa)
	Operating RH	0 ~ 95 %RH
	Gas Temp.	-30 ~ +600 °C
	Gas Pressure	-50 ~ 30 hPa

Communication	Analog Output	1 Channel, 4 ~ 20 mA
	Digital Output	3 Channel
	Digital Input	1 Channel, DI Voltage 12 VDC ~ 24 VDC
	Display & Input Device	7 inch LCD Monitor (Touch Screen) / USB
	Interface	RS232, 422, 485 / LAN (Ethernet) / Hart

Analyzer Unit	Material	SUS 304
	Dimension	W 330 x D 206 x H 480 mm
	Weight	18.5 kg
	Voltage	110 / 220 VAC, 50 / 60 Hz
	Power Consumption	200 W

Probe	Material	SUS 316, SUS 316Ti
	Length	0.5 ~ 2.5 m
	Weight	10 ~ 20 kg

Purge Motor Unit	Material	SUS 304
	Dimension	W 523 x D 370 x H 605 mm
	Weight	15 kg
	Voltage	3P 480 VAC or 1P 220 VAC
	Power Consumption	0.5 kW ~ 1.5 kW