

MET MASTER PRO 1000

METEOROLOGICAL DATA LOGGER



- ▶ Made in Australia
- ▶ Accurate real-time meteorological readings
- ▶ Easy to use
- ▶ Remote connectivity & telemetry
- ▶ Mains, Battery or Solar Power
- ▶ Local and genuine support



HOW IT WORKS

The Met Master Pro 1000 (MMP1000) is a data logger designed specifically for meteorological applications. The MMP1000 is a user friendly and reliable option for your meteorological monitoring.

On-site programming and set up is made easy with the built in screen/keypad and intuitive menu. Now you can just as easily adjust instrument settings, view live data and download in CSV format remotely with Visual Master Pro Software.

The MMP1000 works seamlessly together with Lufft's German-engineered Smart Weather Sensors to allow you to measure a wide range of parameters.

PERFECT FOR:

- ▶ Governments & Authorities
- ▶ Consultants & Engineering
- ▶ Civil & Construction
- ▶ Mining & Quarries
- ▶ Logistics, Ports & Terminals



MET MASTER PRO 1000

METEOROLOGICAL DATA LOGGER

KEY FEATURES AND HIGHLIGHTS:

- **Manufactured in Australia** with premium quality and service you can trust
- Accurate real-time meteorological readings
- User friendly and reliable
- Keypad on site
- Push or Poll Data
- Variable Averages
- Provides CSV Data Results
- Two Programmable Relays for Process Control or Alarms/ Alerts
- Doubled Memory
- Visual Master Pro Remote Interface
- Mains, Battery or Solar Power
- Available for purchase or rent!



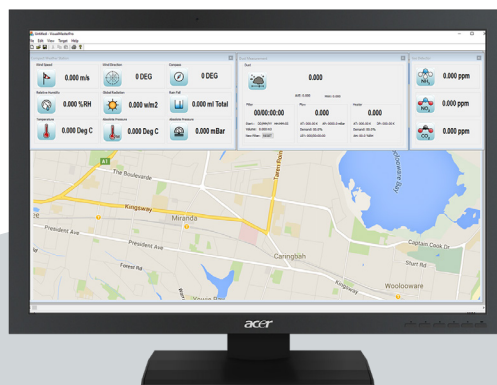
WEATHER & METEOROLOGICAL SENSORS

The Met Master Pro has Plug 'n' Play integration with up to 3 Lufft Meteorological Sensors, which means no additional costly data loggers for your weather monitoring requirements. The MMP has the capability to record up to 47 distinct parameters, including:

- Wind Speed and Direction
- Air Temperature
- Relative Humidity
- Barometric Pressure
- Precipitation Type, Intensity and Quantity
- Solar Radiation
- Lightning Strikes
- and more.

QAMS MASTER PRO RANGE

- MMP 1000 Data Logger
- FMP 5000 Filter Sampler
- FMP 167 Filter Sampler
- DMP 7000 Real-time Particulate Counter



VISUAL MASTER PRO DATA SOFTWARE

VMP Data Logging Software (valued at \$1,799) comes **included** with your Filter Master Pro purchase. The remote interface software requires no coding and makes it simple for both non-technical and expert users to access data and adjust instrument setting at an advanced level.

- Live data display allows you to access first-hand information
- Real-time data display, real-time decision making
- Remote access for data downloading and configuration
- Synchronised data set for ease of download
- Operating on Windows 7 through to Windows 10
- Compatible with QAMS Dust Master Pro, Met Master Pro & Filter Master Pro
- Format available in CSV, HTML and ASCII.



MET MASTER PRO 1000

METEOROLOGICAL DATA LOGGER



PROUDLY MANUFACTURED IN AUSTRALIA BY THOMSON ENVIRONMENTAL SYSTEMS

We developed the QAMS range specifically for outdoor monitoring in Australia's harsh conditions. We built QAMS for ease-of-use, robustness and suitability for a diverse number of applications.

Since the first QAMS monitor launched in 2008, we have continually strived to improve the product and make it the highest quality instrument on the market. With years of field operation and a strong positive response from our users, we are proud that the QAMS range has become a leader in monitoring, construction, mining and industrial monitoring applications.



MET MASTER PRO 1000

Meteorological Inputs	Multiple channels including wind speed, wind direction, humidity, temperature, precipitation, barometric pressure, solar radiation, evaporation, sigma theta, lightning & more.	Extended Data Logging	TES are happy to cooperate with other data logger suppliers to allow integration of our system into existing networks.
Relay Contacts	3 relay contacts (NC/COM/NO), Alarm 1 set point, Alarm 2 set point, Instrument fault alert Max. contact switching 5A	Power Options	Mains Power, Battery Power or Solar Power (all waterproof)
Communications	2 x RS232 digital ports and analogue	Power Requirements	Instrument draws only 300mA (plus power for any weather sensors) Mains Power - Operates from 80 to 260 VAC and is fully weatherproof.
Inputs	2 x RS232, 2 x Analogue (0 to 5 volt or 4-20mA [jumper selectable]), 2 x Counter Channels, 2 x PT100 & 1 x SHT75X inputs included.	Solar Power System	Provides continuous operation based on average of >4.5 hours of sunlight per day, and will continue for up to 3 days with no sun. System includes Solar Panel & Stand, Battery & Battery box, Regulator
Outputs	3 x Analogue Outputs (0 to 2.5 volt standard, 0 - 5 volt optional, or 4-20mA [jumper selectable]), 1 x RS232 Output, Ethernet Module Optional, 3 x Solid State Relays for Audio and Visual Alarms	Standard Battery System	Provides approx. 210 hours of operation
Digital Inputs	3 optically isolated inputs, voltage free	Portable Battery System	Provides approx. 48 hours of operation
Data Download	Data can be polled or automatically and continually pushed to your server	Enclosure Type	NEMA4 / IP66 rated
Display Type	128 x 64 bit low energy graphical LCD display	Mounting Options	TES Heavy Duty Tripod 2m 10m Mast (Pivotal) 10m Mast (Pump Up) Fixed
Keypad / User Interface	12 button function with keys	Weight and Dimensions	System: 4.8kg Heated Inlet: 1kg Width 300mm Depth 200mm Height 350mm
Alarm Capabilities	SMS messaging to mobile phone, external siren, visual beacon and email alerts	Shipping Dimensions:	MMP1000: W x 50, D x 40, H x 30cm, 5kg Tripod: W x 16, D x 16, H x 155cm, 8kg Lufft Sensor Mounting Arm: W x 70, D x 21, H x 10cm, 3.5kg Lufft Weather Sensor: (approx.), W x 42, D x 27, H x 22cm, 3kg
Internal Data Logging/Memory	8MB internal data logging with full flash memory back-up. Time and date stamped and capable of logging data from the various analogue and digital inputs	Operating Conditions	-10 to 50 deg C temperature range 0 to 95% humidity range
Data Logging Interval	Fully user adjustable from 5 to 999 seconds		